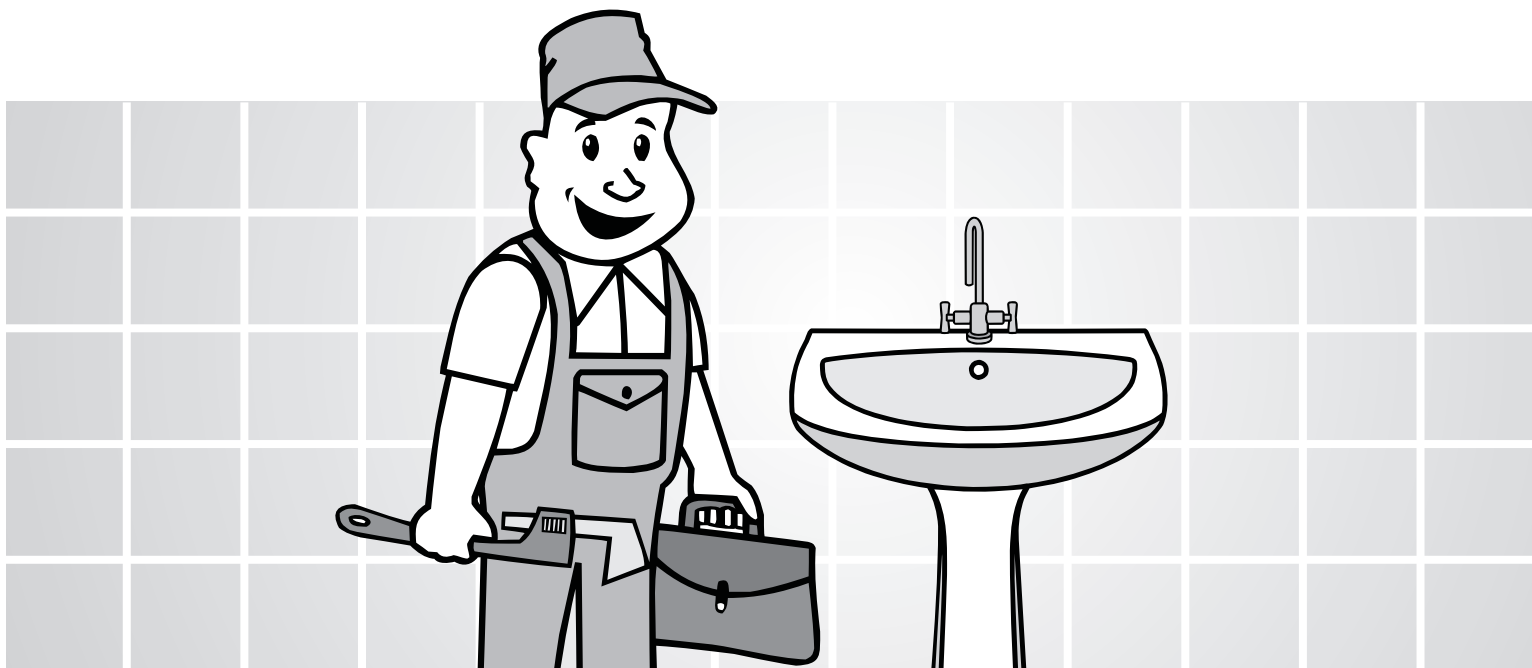


INSTALLATION INSTRUCTIONS FOR WASH BASIN PEDESTAL

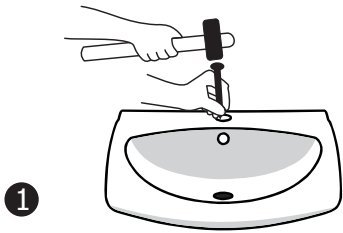


S. No	Catalogue No.	Items Name	Tap Hole	Catalogue No.	Related Pedestal
1.	10090	WB VIVA 56X48 cm	-	11036	VIVA PEDESTAL
2.	10094	WB DEIMOS 64X42 cm	-	11037	DEIMOS PEDESTAL
3.	10096	WB STUDIO 57X48 cm	-	11038	STUDIO PEDESTAL
4.	10098	WB NEO 55X40 cm	-	11032	OPAL PEDESTAL
5.	10099	WB MINI NEO 50X40 cm	-	11032	OPAL PEDESTAL
6.	91014	WB CLIPPER 66X47 cm	-	91109	CLIPPER PEDESTAL
7.	91035	WB ESSENCE 60X45 cm	-	91113	ESSENCE PEDESTAL
8.	91040	WB PURE 62X49 cm	-	91114	PURE PEDESTAL
9.	91049	WB CEDAR 55X45 cm	-	91116	CEDAR PEDESTAL
10.	91052	WB TESSA 50X45X36.5 cm	-	NOT APPLICABLE	NOT APPLICABLE
11.	91053	WB KYLIS 57.5X48X39 cm	-	NOT APPLICABLE	NOT APPLICABLE
12.	91075	WB BERLIN 56X46X38.5 cm	-	NOT APPLICABLE	NOT APPLICABLE
13.	91076	WB ATLANTA 46X56.5X39 cm	-	NOT APPLICABLE	NOT APPLICABLE
14.	91077	WB MODENA 57X48X39 cm	-	NOT APPLICABLE	NOT APPLICABLE
15.	91078	WB TWILIGHT 57X47X38.5 cm	-	NOT APPLICABLE	NOT APPLICABLE

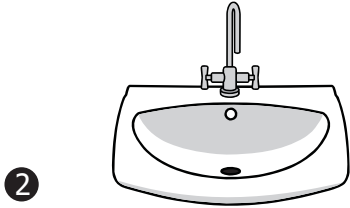


hindware

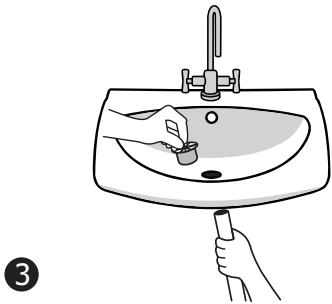
STEPS FOR INSTALLATION



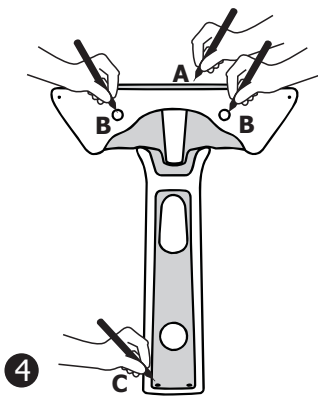
- 1** If tap hole is semi punch, make the hole as shown using a pointed chisel and hammer but tapping softly



- 2** Fit the faucet and connect hot and cold connection pipes to the faucet.

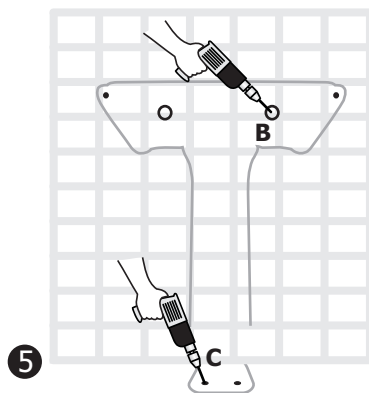


- 3** Fit the waste hole coupling in the waste outlet of WB.

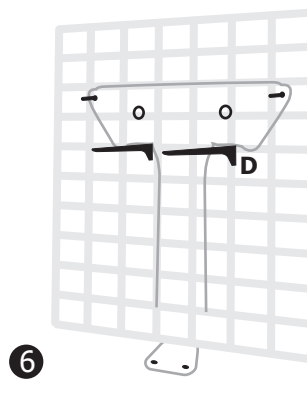


Place the WB with pedestal at the location of installation and mark the following places

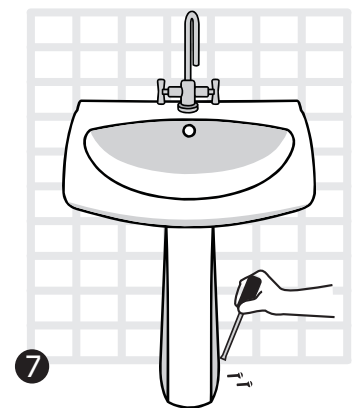
- A. Top surface of the WB.
- B. Rag bolt hole area on the surface of the wall.
- C. Pedestal fixing screw hole area on the floor.
- D. If brackets are to be fixed in place of rag bolts, first mark the position of bracket fixing points on the wall. (The fixed bracket should be of desired length as mentioned in the table. In this case fixing of rag bolt is not required).



- 5** Remove the WB and Pedestal and make hole at the following locations
- B. Mark position of the rag bolt with the help of 10 mm drill bit to grout the 12 mm dia bolts to fix the Wash Basin (Both the Rag bolts should be in straight line. The projection of bolt should be 50 mm so that Wash Basin can be tightened with washer and nut).
 - C. Drill the floor with 5 mm drill bit at the marked pedestal screw fixing area and insert PVC sleeves inside the hole.



- 6** If the bracket is to fit, in that case height of the bracket has to be ascertained after keeping the Wash Basin on pedestal and mark the position of hole for fixing the bracket. Drill on the wall with 5 mm drill bit and use PVC sleeves to tight screw on the wall.



- 7** Place WB such that rag bolt hole of WB is inserted into the fixed bolt on the wall or bracket is grout on the wall and put the pedestal below the WB at the marked location of screw fixing hole and tighten the pedestal with the help of screws. After that tighten the rag bolts of the WB. After complete installation of WB and Pedestal connect the connection pipe of water tap with hot and cold connection angle valve.

SPECIFICATION FOR WASH BASIN INSTALLATION :

Item Description with size (cm)	Distance between Rag bolt fixing hole (mm) (Tolerance - + / -10mm)	Length of bracket (mm) (Tolerance : +3mm)
WB VIVA 56X48 cm	-	-
WB DEIMOS 64X42 cm	-	-
WB STUDIO 57X48 cm	-	-
WB WB NEO 55X40 cm	-	-
WB MINI NEO 50X40 cm	-	-
WB CLIPPER 66X47 cm	-	-
WB ESSENCE 60X45 cm	-	-
WB PURE 62X49 cm	-	-
WB CEDAR 55X45 cm	-	-
WB TESSA 50X45X36.5 cm	-	-
WB KYLIS 57.5X48X39 cm	-	-
WB BERLIN 56X46X38.5 cm	-	-
WB ATLANTA 46X56.5X39 cm	-	-
WB MODENA 57X48X39 cm	-	-
WB TWILIGHT 57X47X38.5 cm	-	-

* Screw fixing hole distance on skirting.



hindware