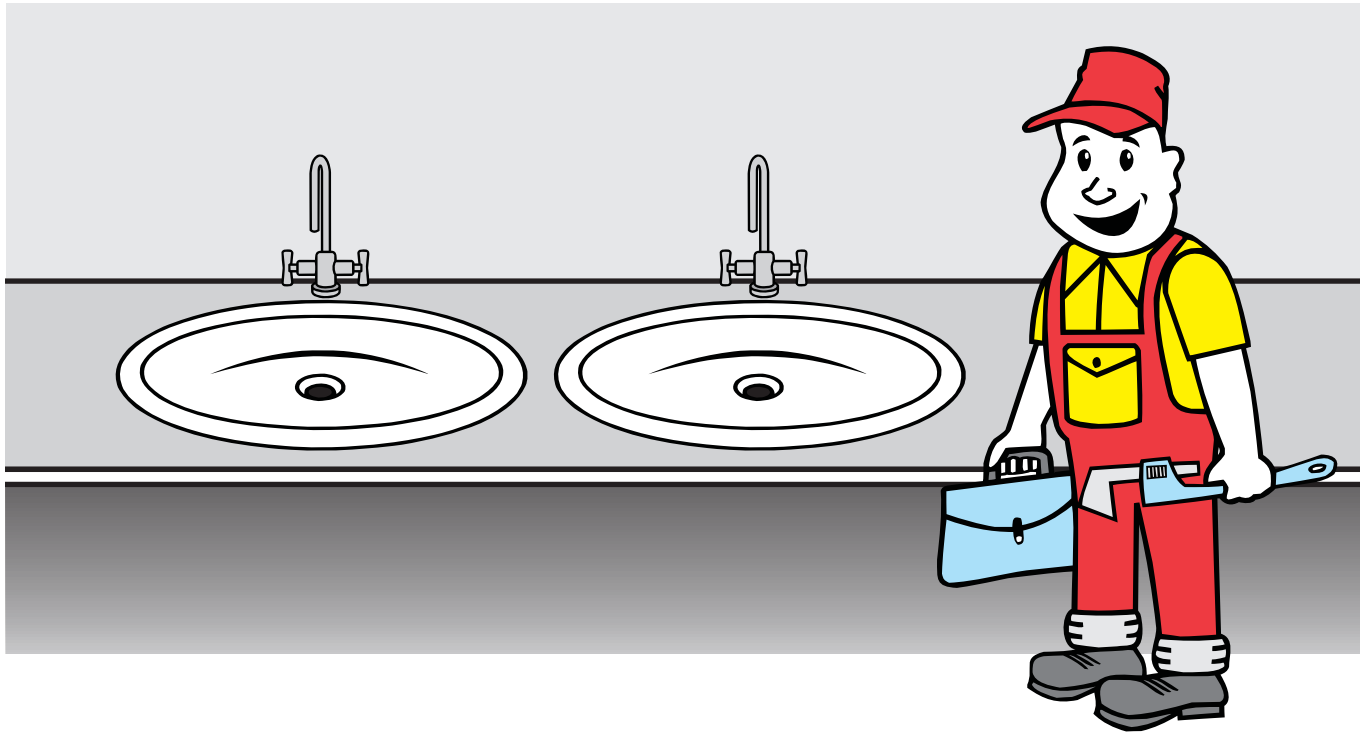


INSTALLATION INSTRUCTIONS FOR

Counter Top Wash Basin



S. No.	Catalogue No.	Item Description
1.	10014	WB STARLET 38 CMØ
2.	10017	WB OVAL 56X41 CM
3.	10038	WB VIENNE OVAL 51X45 CM
4.	10045	WB RHAPSODY 63X50 CM
5.	10046	WB OVAL TIFFANY 51X38 CM
6.	10051	WB MINI OVAL 49X36 CM
7.	10052	WB ROUND STARLET 49 CMØ
8.	10056	WB VICEROY COUNTER TOP 51X42 CM
9.	91008	WB OPTRA 57X44 CM
10.	91028	WB TOPAZ 75X46 CM
11.	91056	WB TESSA 60X46 CM
12.	91080	WB RIPPLE 45X45 CM



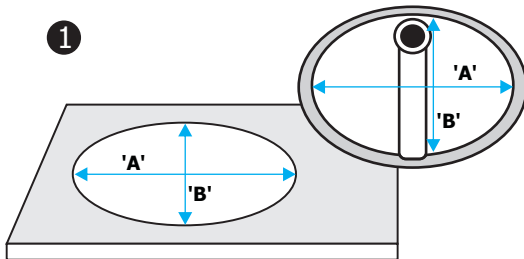
hindware

RECOMMENDED STANDARD SPECIFICATION TABLE

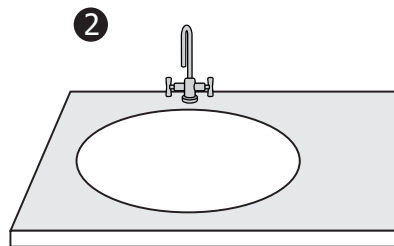
S. NO	CAT. NO.	ITEM DESCRIPTION	CUT ON MARBLE/ SLAB (IN CM) 'A' X 'B'
1.	10014	WB STARLET 38 CMØ	36 CM Ø
2.	10017	WB OVAL 56X41 CM	53X37.5 CM
3.	10038	WB VIENNE OVAL 51X45 CM	44X32 CM
4.	10045	WB RHAPSODY 63X50 CM	60.5X58.5 CM
5.	10046	WB OVAL TIFFANY 51X38 CM	49X36 CM
6.	10051	WB MINI OVAL 49X36 CM	45X33 CM
7.	10052	WB ROUND STARLET 49 CMØ	47CM Ø
8.	10056	WB VICEROY COUNTER TOP 51*42 CM	41X37.5 CM
9.	91008	WB OPTRA 57X44 CM	47X40 CM
10.	91028	WB TOPAZ 75X46 CM	68X42 CM
11.	91056	WB TESSA 60X46	41X26 CM
12.	91080	WB RIPPLE 45X45	38 CM Ø

Note:- For cut size it is recommended to make the cut in the marble/ Slab according to Wash Basin.

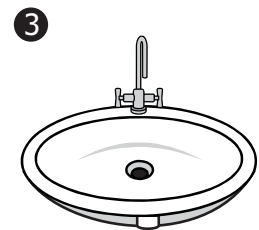
STEPS FOR INSTALLATION



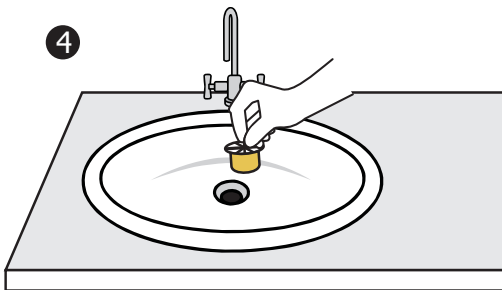
The cutout is made on the slab according to the size of the fixing area of Wash Basin.



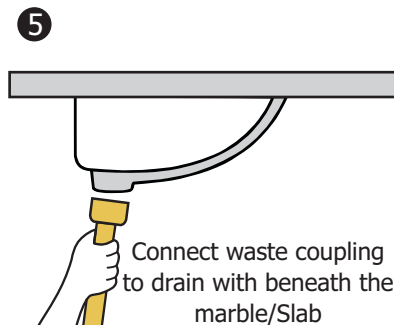
If tap hole is not provided in Wash Basin, then extra hole is required on marble to connect the connection pipe of water tap with hot & cold connection angle valve.



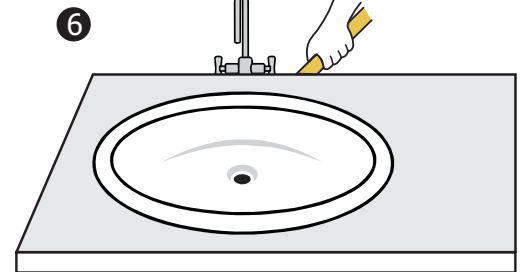
If tap hole is required in Wash Basin, then fix the water tap in tap hole to connect the connection of water tap with hot & cold connection angle valve.



Place the WB on the slab and put sealant at the bottom of rim of WB to fix WB.
Fit the waste hole coupling in waste outlet of WB.



Connect waste coupling to drain with beneath the marble/Slab through bottle tarp.



Connect cold & hot connecting pipe of water tap with cold and hot connection angle valve.



hindware