

INSTALLATION INSTRUCTIONS FOR

EWC W/M EXTENDED WITH CISTERN



S. No.	Catalogue No.	Item Description
1.	20048 & 21032	EWC Ext. W\M Crystal with Crystal Cistern
2.	20058 & 21028	EWC Ext. W\M Studio with Studio\Vista Cistern
3.	20072 & 21048	EWC Ext. W\M Cornice with Cornice Cistern
4.	92055 & 92121	EWC Ext. W\M Cornice with Cornice Cistern
5.	20084 & 23052	EWC Ext. W\M Mario with Mario Cistern
6.	92061 & 92123	EWC Ext. W\M Viva with Viva Cistern
7.	92064 & 92124	EWC Ext. W\M Rubbic with Rubbic Cistern
8.	92098 & 92129	EWC Ext. W\M Atlanta with Atlanta Cistern

RECOMMENDED STANDARD SPECIFICATION TABLE FOR EWC W/M EXTENDED WITH CISTERN

Sr. No.	Cat No.	Description	Dist. Between centre of fixing bolt (A)	Dist. Between centre line of fixing bolt to centre of outlet (B)	Dist. between face of outlet to wall (C)
1.	20048	EWC Ext. W\M Crystal	255mm ±5mm	85 mm ±5mm	150 mm
2.	20058	EWC Ext. W\M Studio	200mm ±5mm	185 mm ±5mm	140 mm
3.	20072 & 92055	EWC Ext. W\M Cornice	250mm ±5mm	65 mm ±5mm	140 mm
4.	20084	EWC Ext. W\M Mario	200mm ±5mm	170 mm ±5mm	-
5.	92061	EWC Ext. W\M Viva	230mm ±5mm	100 mm ±5mm	-
6.	92064	EWC Ext. W\M Rubbic	175mm ±5mm	125 mm ±5mm	-
7.	92098	EWC Ext. W\M Atlanta	205mm ±5mm	100 mm ±5mm	-



hindware

STEPS FOR INSTALLATION

1

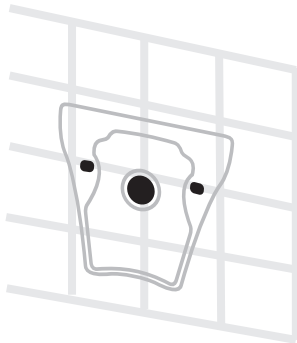


400mm.
height is
recommended from finished floor

Grout bracket chair / bolts of 12mm Ø
at a distance of (A) in the wall such that
the height of front rim up to finished
floor should be 400mm & bolts should be
projected 70 mm from the finished wall.

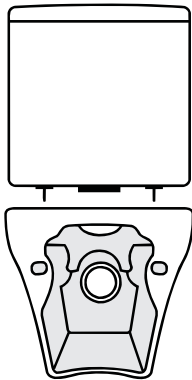
(It is recommended to check with EWC
physically)

2



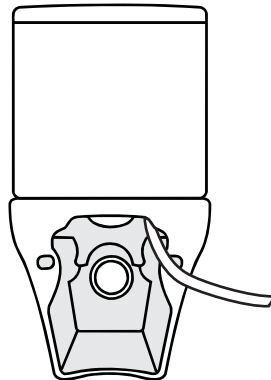
Fix the rag bolt with the help of sleeves &
The outlet hole in the wall should be
made as mentioned in (B).

4



Place cup type rubber gasket at the bottom
of beta valve and couple with W\M Ext.
EWC with fly nut.

5



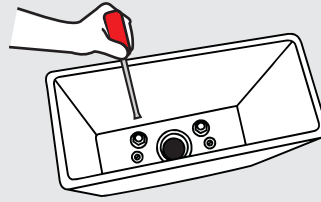
Connect the flexible pipe for incoming
water at the bottom of beta valve &
connect the PVC pipe in the outlet of EWC
to fit inside outlet hole on the wall.
Except in EWC Ext. W\M Studio.

6

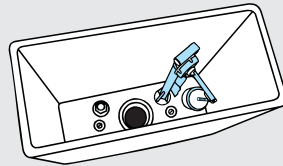


Before installation, fit the seat cover on EWC.
Fit the W\M Ext. EWC in the bolts (fitted inside wall)
and outlet rubber gasket on outlet of EWC for
connecting with waste outlet. Tight the same & put
chrome plated cap on the bolts and connect the
water connection with the flexible connecting pipe.

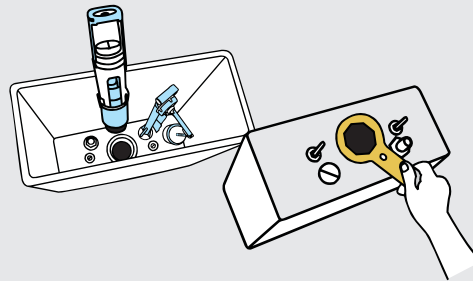
3 All the fitting components should be fitted as mentioned below.



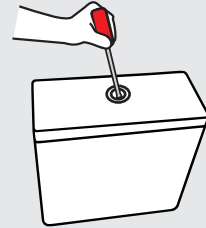
i) Fit the brass bolt in the holes of
Cistern with washer & nut to couple the
Cistern with EWC.



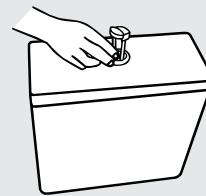
ii) Fit the bottom inlet ball valve in left or
right side (depends upon the water
connection line) & other side hole should
be plugged with PVC plug.



iii) Fit the beta valve in the central
outlet hole & tight the checknut at the
bottom of cistern.



iv) Fit the dual flush knob on lid & screw
with the beta valve bracket for the
fitment of lid on Cistern shell.



v) Put both the buttons (6L/3L) inside the
dual flush Knob.

Note:- The float can be adjusted up or down for the desired water level inside the cistern.



It is suggested to fit the seat cover
before installation

hindware